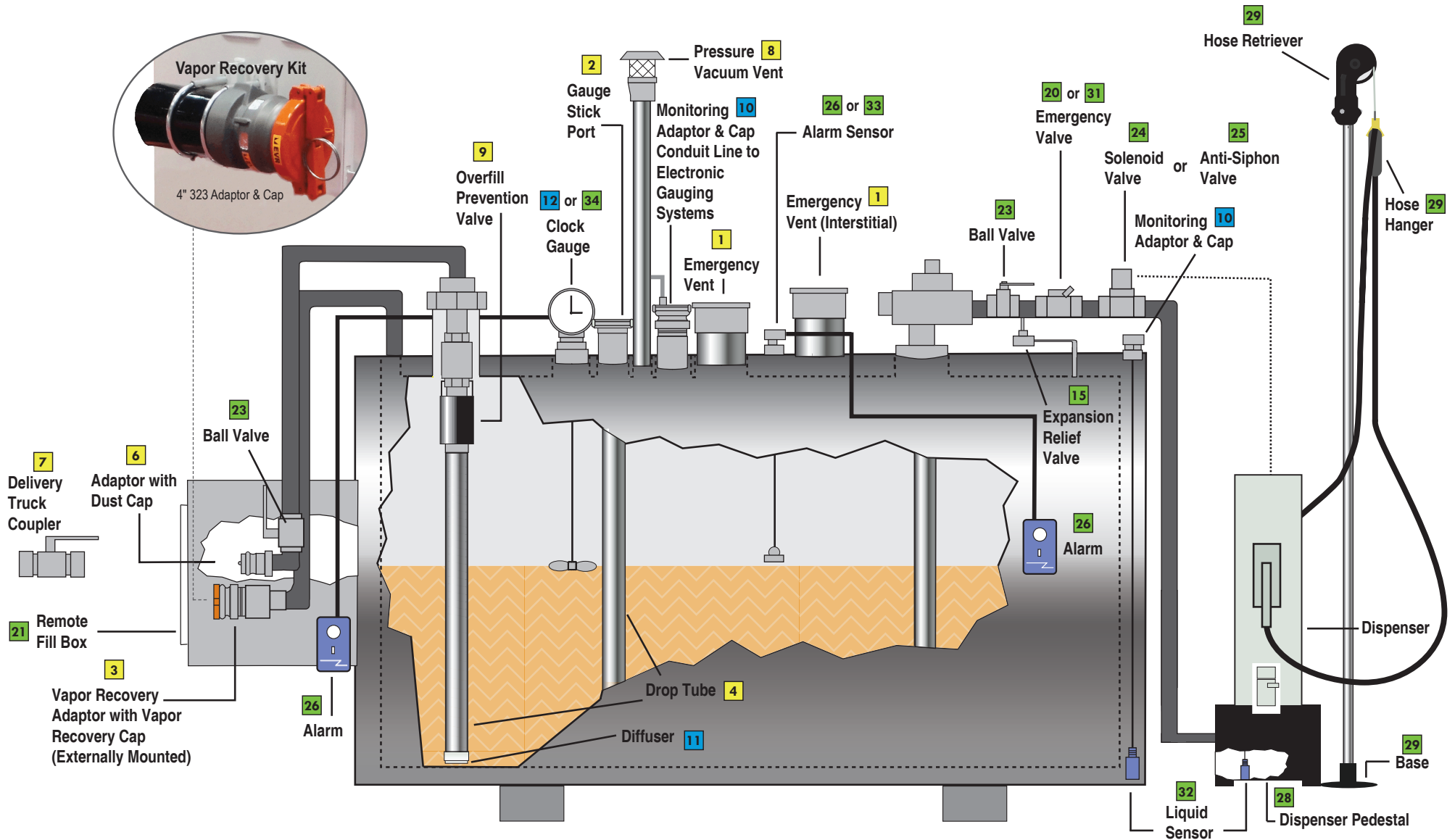


Protected Double Wall Tank with Tank-Mounted Remote Fill



 MORRISON BROS. CO.

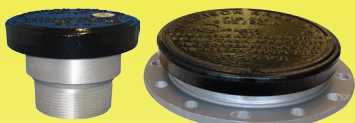
CERTIFIED REQUIRED PRODUCTS
 These products are required on gasoline Phase 1 EVR aboveground storage tank systems.

CERTIFIED OPTIONAL PRODUCTS
 These products are not required for EVR compliance; however, if a monitoring cap and adaptor, a drop tube diffuser, and/or a mechanical tank gauge are needed for a tank system, then these Morrison Bros. Co. CARB AST EVR products are required on the tank system.

RECOMMENDED PRODUCTS
 These products are not considered part of the Phase 1 EVR AST system certified by CARB but may be needed to complete a tank system.

CERTIFIED REQUIRED PRODUCTS

1 Fig. 244 Series Emergency Vent



2 Fig. 305 Series Gauging Port Adaptor & Cap

(Note: The mechanical gauge can be substituted for the gauge stick port.)



3 Fig. 323/323C Series Vapor Adaptor & Cap



4 Fig. 419 Series Drop Tube



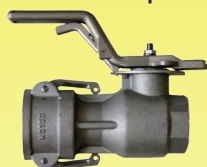
5 Fig. 516 Series Spill Container



6 Fig. 927/735DC Series Dry Disconnect Adaptor & Cap



7 Fig. 928 Series Dry Disconnect Coupler



8 Fig. 5885 Husky Series Pressure Vacuum Vent



9 Fig. 9095 Series Overfill Prevention Valves



CERTIFIED OPTIONAL PRODUCTS

10 Fig. 305 Series Monitoring Adaptor & Cap



11 Fig. 539 Series Drop Tube Diffuser



12 Fig. 818, 818C, 918, 918C, & 918DP Series Mechanical Tank Gauge

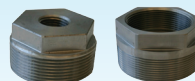
(Note: The mechanical gauge can be substituted for the gauge stick port.)



13 Fig. 560, 561, 562, & 563 Series Extractors



14 Fig. 184 & 184S Series Bushings



RECOMMENDED PRODUCTS

15 Fig. 78 Expansion Relief Valve

16 Fig. 157 Suction Pipe Strainer

17 Fig. 158 Series Vertical Check Valve

18 Fig. 246A Series Swing Check Valve

19 Fig. 284 Series Line Strainer

20 Fig. 346 Series External Emergency Valve

21 Fig. 515 Series Remote Fill Spill Container

22 Fig. 715 Series Remote Fill Box

23 Fig. 691 Series Ball Valve

24 Fig. 710 Series Solenoid Valve

25 Fig. 910 or 912 Series Anti-Siphon Valve

26 Fig. 918 Alarm & Sensor

27 Fig. 958 Series Check Valve

28 Fig. 434/434S or 435 Dispenser Pedestal

29 Fig. 610 Hose Retriever & 611 Hose Hanger

30 Fig. 934 Single Poppet Foot Valve

31 Fig. 446 Emergency Shut-Off Valve

32 Fig. 924LS Liquid Sensor

33 Fig. 925 Multi-Level Sensor

34 Fig. 1218 Electronic Tank Gauge

35 Fig. 636 Emergency Shut-Off Valve