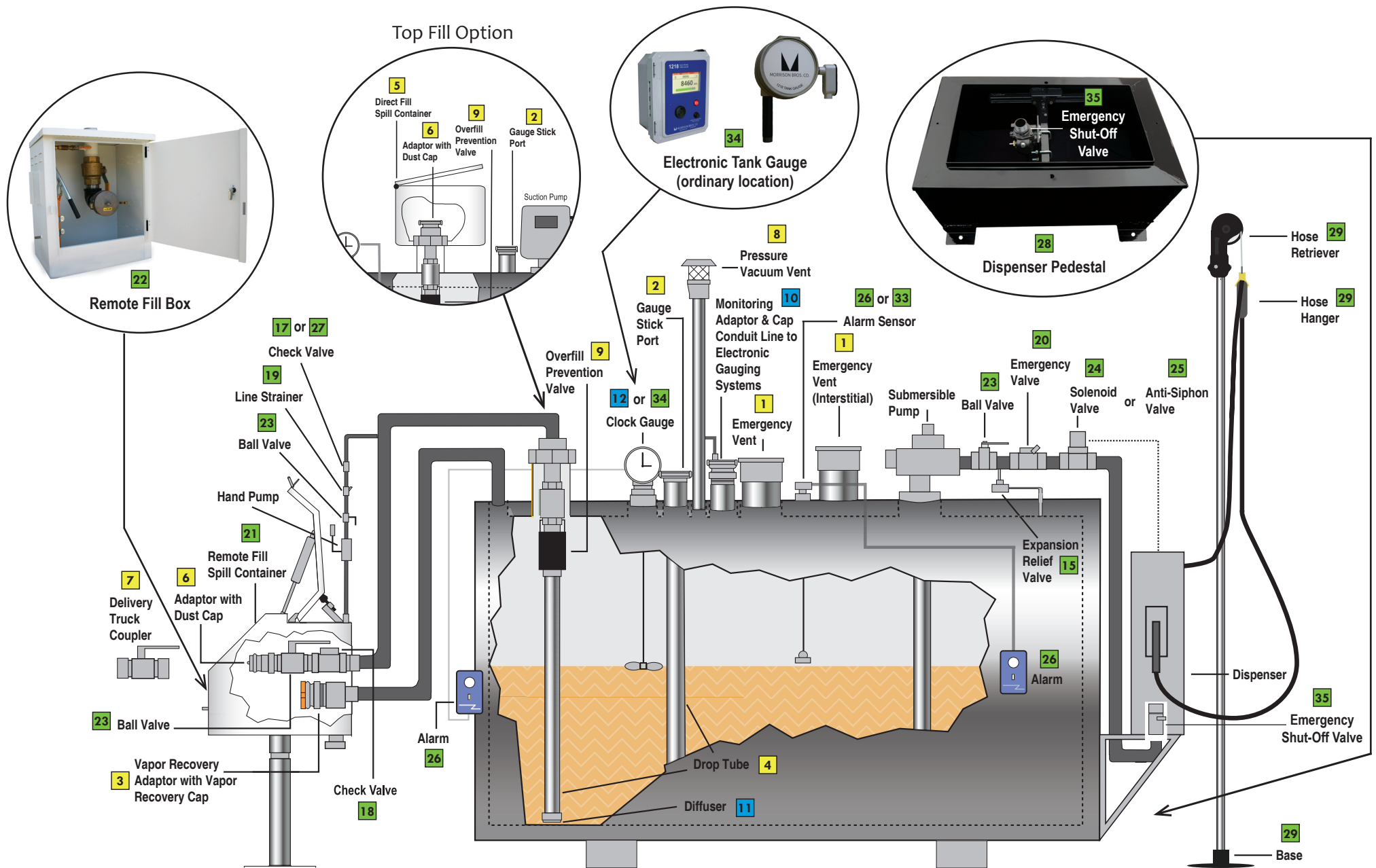


Protected Double Wall Tank with Remote Fill



CERTIFIED REQUIRED PRODUCTS

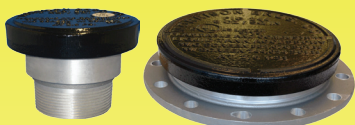
These products are required on gasoline Phase 1 EVR aboveground storage tank systems.

CERTIFIED OPTIONAL PRODUCTS

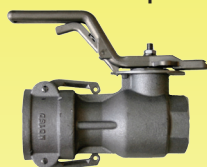
These products are not required for EVR compliance; however, if a monitoring cap and adaptor, a drop tube diffuser, and/or a mechanical tank gauge are needed for a tank system, then these Morrison Bros. Co. CARB AST EVR products are required on the tank system.

RECOMMENDED PRODUCTS

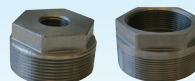
These products are not considered part of the Phase 1 EVR AST system certified by CARB but may be needed to complete a tank system.

CERTIFIED REQUIRED PRODUCTS**1 Fig. 244 Series Emergency Vent****2 Fig. 305 Series Gauging Port Adaptor & Cap**

(Note: The mechanical gauge can be substituted for the gauge stick port.)

**3 Fig. 323/323C Series Vapor Adaptor & Cap****4 Fig. 419 Series Drop Tube****5 Fig. 516 Series Spill Container****6 Fig. 927/735DC Series Dry Disconnect Adaptor & Cap****7 Fig. 928 Series Dry Disconnect Coupler****8 Fig. 5885 Husky Series Pressure Vacuum Vent****9 Fig. 9095 Series Overfill Prevention Valves****CERTIFIED OPTIONAL PRODUCTS****10 Fig. 305 Series Monitoring Adaptor & Cap****11 Fig. 539 Series Drop Tube Diffuser****12 Fig. 818, 818C, 918, 918C, & 918DP Series Mechanical Tank Gauge**

(Note: The mechanical gauge can be substituted for the gauge stick port.)

**13 Fig. 560, 561, 562, & 563 Series Extractors****14 Fig. 184 & 184S Series Bushings****RECOMMENDED PRODUCTS****15 Fig. 78 Expansion Relief Valve****16 Fig. 157 Suction Pipe Strainer****17 Fig. 158 Series Vertical Check Valve****18 Fig. 246A Series Swing Check Valve****19 Fig. 284 Series Line Strainer****20 Fig. 346 Series External Emergency Valve****21 Fig. 515 Series Remote Fill Spill Container****22 Fig. 715 Series Remote Fill Box****23 Fig. 691 Series Ball Valve****24 Fig. 710 Series Solenoid Valve****25 Fig. 910 or 912 Series Anti-Siphon Valve****26 Fig. 918 Alarm & Sensor****27 Fig. 958 Series Check Valve****28 Fig. 434/434S or 435 Dispenser Pedestal****29 Fig. 610 Hose Retriever & 611 Hose Hanger****30 Fig. 934 Single Poppet Foot Valve****31 Fig. 446 Emergency Shut-Off Valve****32 Fig. 924LS Liquid Sensor****33 Fig. 925 Multi-Level Sensor****34 Fig. 1218 Electronic Tank Gauge****35 Fig. 636 Emergency Shut-Off Valve**