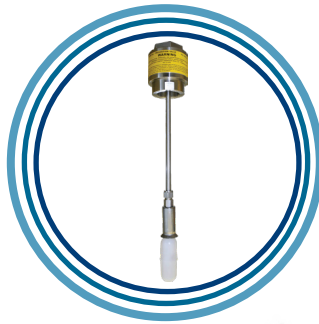
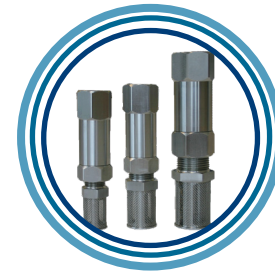
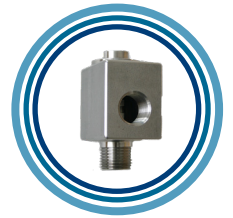
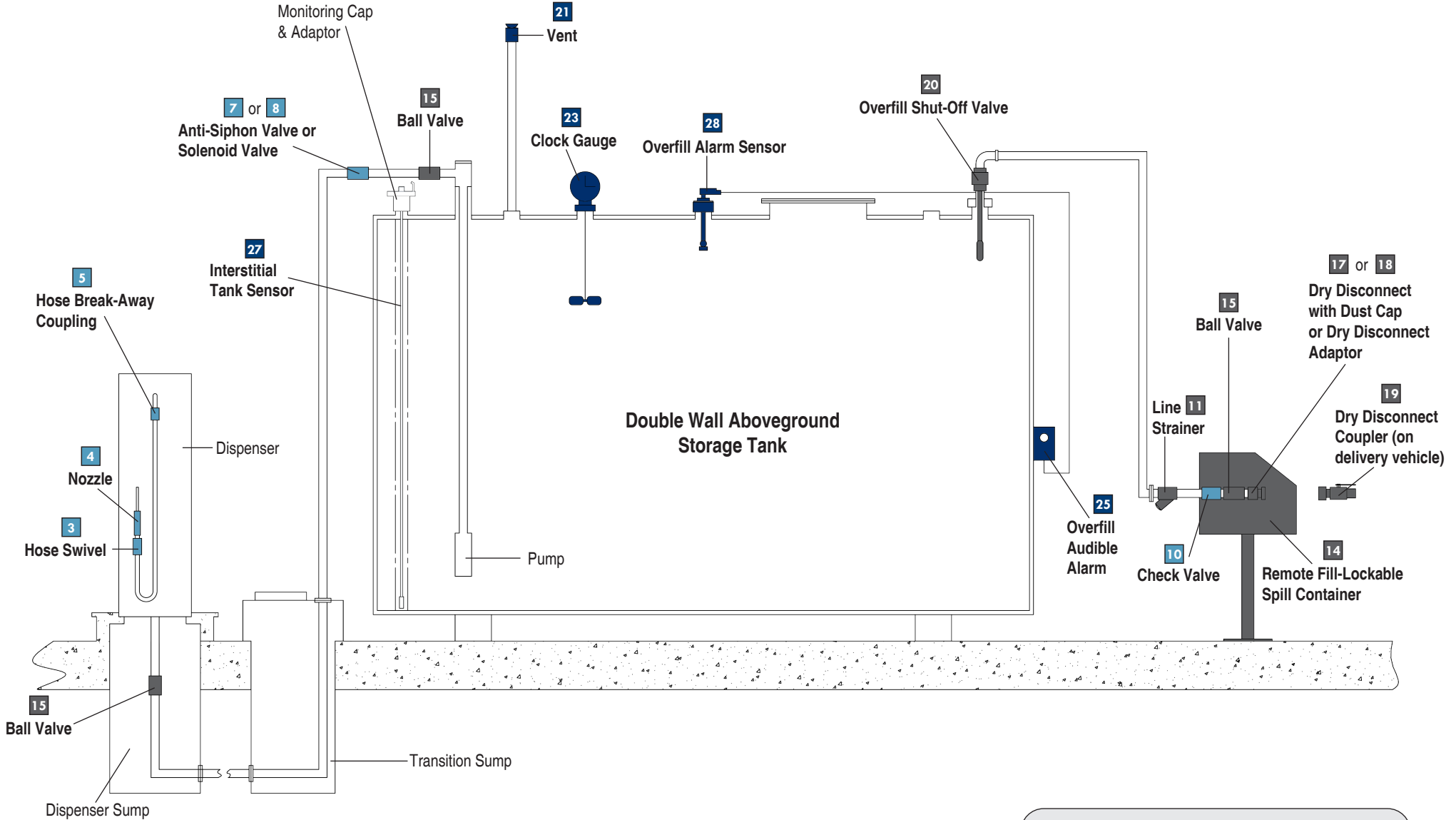


Diesel Exhaust Fluid Compatible Products



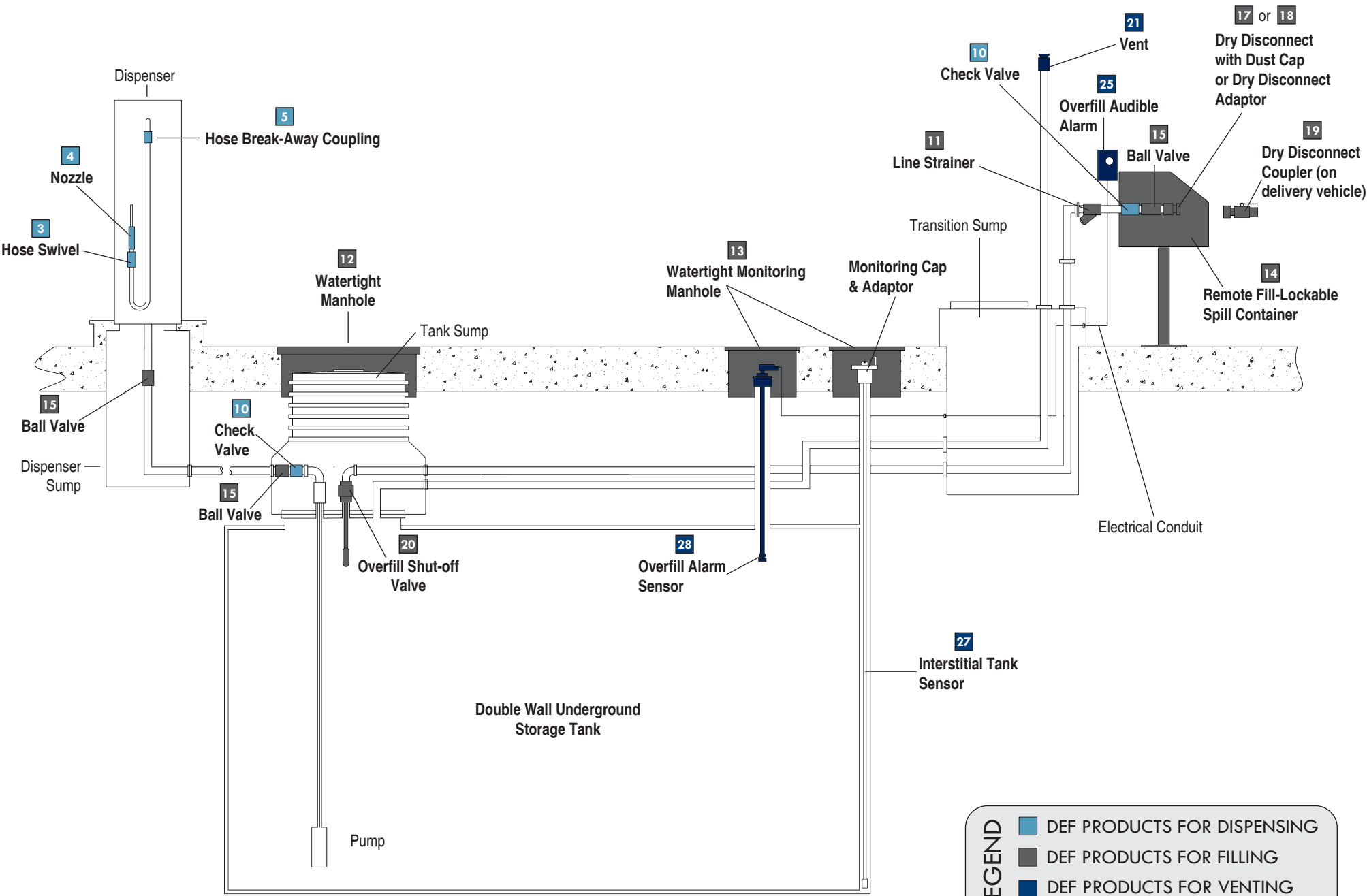
Aboveground Installation



LEGEND

- DEF PRODUCTS FOR DISPENSING
- DEF PRODUCTS FOR FILLING
- DEF PRODUCTS FOR VENTING AND GAUGING

Underground Installation



LEGEND

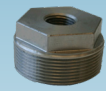
- DEF PRODUCTS FOR DISPENSING
- DEF PRODUCTS FOR FILLING
- DEF PRODUCTS FOR VENTING AND GAUGING

DEF Products for Dispensing

1 Fig. 076S Expansion Relief Valve



2 Fig. 184S Bushing



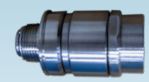
3 Fig. 222DEF Hose Swivel



4 Fig. 602DEF Automatic Shut-Off Nozzle



5 Fig. 609DEF Break-A-Way



6 Fig. 610 Hose Retriever & Fig. 611 Hose Hanger



7 Fig. 710SS Solenoid Valve



8 Fig. 912 Anti-Siphon Valve



9 Fig. 934 Single Poppet Foot Valve with Expansion Relief



10 Fig. 958 In-Line Check Valve



1	076S Expansion Relief Valves	
	076S--0100 AV	½"—25 PSI setting, SS
	076S--0200 AV	½"—50 PSI setting, SS

2	184S Double Tapped Bushings	
	184S--0200 MB	2" x ½" x ½", SS
	184S--0300 MB	2" x ¾" x ¾", SS
	184S--0400 MB	2" x 1" x 1", SS
	184S--0500 MB	2" x 1½" x 1½", SS
	184S--2100 MB	4" x ¾" x ¾", SS
	184S--2200 MB	4" x 1" x 1", SS
	184S--2400 MB	4" x 1½" x 1½", SS
	184S--2500 MB	4" x 2" x 2", SS
	184S--2700 MB	4" x 3" x 3", SS

3	222DEF Hose Swivel	
	222DEF0000 1S	¾" Male x ¾" Female, SS

4	602DEF Automatic Shut-Off Nozzles	
	602DEF0000 1N	¾", SS
	602DEFM000 1N	¾", SS, with miss-filling device
<i>Consult website for BSP options.</i>		

5	609DEF Break-A-Way	
	609DEF0000 1B	¾" Male x ¾" Female, SS

6	610 Hose Retrievers & 611 Hose Hangers	
	610---0000 AR	Hose retriever assembly, less weight kit
	610---0100 AR	Hose retriever assembly, with weight kit
	610---0103 AK	Single weight kit
	610---0203 AK	Two weight kit
	610B--0000 AR	Hose retriever assembly, with weight kit & base
	610B--0100 WAPB	Standard base
	610B--0200 AB	Hinged base
	611---0100 AH	Hose hanger
	611---0150 AH	Hose hanger
	611---0200 AH	Hose hanger
<i>Hosebuns also available.</i>		

7	710SS Normally Closed Solenoid Valves with 120/60 Volt AC Coil	
	710SS-2075 1V	¾"—SS (Teflon®)
	710SS-2100 1V	1"—SS (Teflon®)
	710SS-2150 1V	1½"—SS (Teflon®)
	710SS-2200 1V	2"—SS (Teflon®)
	710SS-0300 1V	3"—SS (Aluminum piston, Viton® seal)

8	912 Anti-Siphon Valves with Expansion Relief	
	912-050500 AV	½"—0' to 5' W.C.
	912-051000 AV	½"—5' to 10' W.C.
	912-051500 AV	½"—10' to 15' W.C.
	912-052000 AV	½"—15' to 20' W.C.
	912-070500 AV	¾"—0' to 5' W.C.
	912-071000 AV	¾"—5' to 10' W.C.
	912-071500 AV	¾"—10' to 15' W.C.
	912-072000 AV	¾"—15' to 20' W.C.
	912-100500 AV	1"—0' to 5' W.C.
	912-101000 AV	1"—5' to 10' W.C.
	912-101500 AV	1"—10' to 15' W.C.
	912-102000 AV	1"—15' to 20' W.C.
<i>Consult website for BSP options.</i>		

9	934 Single Poppet Foot Valves & Suction Pipe Strainers	
	934--10500 AV	½", SS, with expansion relief
	934--10700 AV	¾", SS, with expansion relief
	934--11000 AV	1", SS, with expansion relief
	934---1500 AV	1½", SS
	934---2000 AV	2", SS
	934---0500 AS	½", SS
	934---0700 AS	¾", SS
	934---1000 AS	1", SS
	934---1500 AS	1½", SS
	934---2000 AS	2", SS
	<i>Consult website for BSP options.</i>	

Suction Pipe Strainers

10	958 In-Line Check Valves	
	958---0500 AV	½", SS
	958---0700 AV	¾", SS
	958---1000 AV	1", SS
	958---1100 1V	1½", SS
	958---1200 1V	2", SS
	958--10500 AV	½", SS, with expansion relief
	958--10700 AV	¾", SS, with expansion relief
	958--11000 AV	1", SS, with expansion relief
<i>Consult website for BSP options.</i>		

DEF Products for Filling

11 Fig. 284S Bottom Clean-Out Line Strainer



14 Fig. 515SD Remote Spill Container



16 Fig. 715S Remote Fill Boxes



19 Fig. 928S Dry Disconnect Couplers



12 Fig. 318L Lightweight Manholes



15 Fig. 691BSS Full Port Locking Ball Valves



17 Fig. 800DCS Dust Caps & Fig. 800F Quick Couplings



20 Fig. 9095SS Overfill Prevention Valve



13 Fig. 418TM Manholes



18 Fig. 927S Dry Disconnect Adaptors



11 284S Bottom Clean-Out Line Strainers		
284S--1000 1S	½"	SS, 20 mesh screen
284S--1100 1S	¾"	SS, 20 mesh screen
284S--1200 1S	1"	SS, 20 mesh screen
284S--3000 1S	1½"	SS, 20 mesh screen
284S--3100 1S	2"	SS, 20 mesh screen
284S--3200 1S	3"	SS, 20 mesh screen
40 & 100 mesh screens are available.		

12 318L Lightweight Manholes		
318L--3800 AMC	38" x 10"	Non-bolted
318L--3900 AMC	38" x 18"	Non-bolted
318L--4400 AMC	44" x 10"	Non-bolted
318L--4500 AMC	44" x 18"	Non-bolted
Size = Approximate cover diameter x skirt length. Consult website for additional options.		

13 418TM Manholes		
418TM-1100 AM	18"x12"	

14 515SD 15 Gallon Remote Spill Containers		
515SD-0200 AC	2"	SS, pedestal mount
515SD-0300 AC	3"	SS, pedestal mount
515SD-0400 AC	4"	SS, pedestal mount
515SD-2200 AC	2" & 2"	SS, pedestal mount
515SD-2300 AC	3" & 3"	SS, pedestal mount
515SDST0200 AC	2"	SS, four-leg stand
515SDST0300 AC	3"	SS, four-leg stand
515SDST0400 AC	4"	SS, four-leg stand
515SDST2200 AC	2" & 2"	SS, four-leg stand
515SDST2300 AC	3" & 3"	SS, four-leg stand
515ST-0100 AS	Four leg adjustable stand	
515STS0100 AS	SS, four leg adjustable stand	

15 691BSS Full Port Locking Ball Valves		
691BSS0200 1V	¾"	SS
691BSS0300 1V	½"	SS
691BSS0400 1V	¾"	SS
691BSS0500 1V	1"	SS
691BSS0700 1V	1½"	SS
691BSS0800 1V	2"	SS
691BSS1000 1V	3"	SS

16 715S Remote Fill Boxes		
715S-TT3-XXXX-0	3" SS fill box only (top connection)	
715S-TK3-XXXX-0	3" SS fill box only (back connection)	
715FS-TK2-XXXX-0	2" SS fill box only (in-wall with back connection)	
715S--S400 SS	SS four-leg stand	
X = Consult 715 specification sheets for component options.		

17 800DCS Dust Caps & 800F Quick Couplings		
800DCS0000 1C	¾"	SS
800DCS0100 1C	1"	SS
800DCS0300 1C	1½"	SS
800DCS0400 1C	2"	SS
800DCS0500 1C	2½"	SS
800DCS0600 1C	3"	SS
800DCS0700 1C	4"	SS
<hr/>		
800F-S0300 1C	1½"	SS
800F-S0400 1C	2"	SS
800F-S0600 1C	3"	SS

18 927S Dry Disconnect Adaptors		
927S--0150 1A	1½"	adaptor
927S--0200 1A	2"	adaptor
927S--0300 1A	3"	adaptor

19 928S Dry Disconnect Couplers		
928S--0150 1C	1½"	SS coupler
928S--0200 1C	2"	SS coupler
928S--0300 1C	3"	SS coupler

20 9095SS Overfill Prevention Valves (for 2" tank opening applications not requiring a drop tube)		
9095SS0200 AV	SS valve with 2"-16" shut-off, with part F male adaptor	
9095SS0400 AV	SS valve with 2"-28" shut-off, with part F male adaptor	
9095SS0600 AV	SS valve with 2"-76" shut-off, with part F male adaptor	
9095SS2200 AV	SS valve with 2"-16" shut-off, with part A female adaptor	
9095SS2400 AV	SS valve with 2"-28" shut-off, with part A female adaptor	
9095SS2600 AV	SS valve with 2"-76" shut-off, with part A female adaptor	
9095SS9200 AV	SS valve with 2"-16" shut-off, without adaptor	
9095SS9400 AV	SS valve with 2"-28" shut-off, without adaptor	
9095SS9600 AV	SS valve with 2"-76" shut-off, without adaptor	
9095SS9800 AV	SS valve with 2"-96" shut-off, without adaptor	

DEF Products for Venting and Gauging

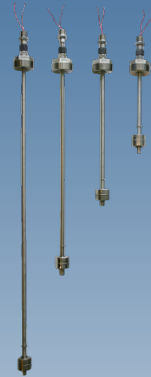
21 Fig. 354T Updraft Vent



25 Fig. 918S/D/Q Alarm Box



28 Fig. 924S Adjustable Level Sensor



22 Fig. 749T Pressure/Vacuum Vent



26 Fig. 918SB/DB/QB Tank Alarm with Rotating Beacon



29 Fig. 925S Multi-Level Sensor



23 Fig. 818T/918T Clock Gauge



27 Fig. 918TCPS Overfill & Interstitial Alarm



24 Fig. 918AC System Interface



21 354T Updraft Vents	
354T--0200 AV	2" slip-on
354T--0300 AV	3" slip-on

22 749T Pressure/Vacuum Vent	
749T--0200 AV	2" slip-on

23 818T/ 918T Clock Gauges (feet & inches)	
818T--0100 AG	2" male thd., standard float
818T--0400 AG	2" male thd., drop tube float
818FT-0100 AG	2" female thd., standard float
818FT-0400 AG	2" female thd., drop tube float
918T--0400 AG	2" male thd., drop tube float, with alarm
918T--2000 AG	2" male thd., drop tube float, less alarm
918FT-0400 AG	2" female thd., drop tube float, with alarm
918FT-2000 AG	2" female thd., drop tube float, less alarm

24 918AC System Interface	
<i>Consult website for additional input/output options.</i>	

25 918S/D/Q Alarm Boxes	
918S--1100 AA	Single channel tank alarm box
918D--1100 AA	Dual channel tank alarm box
918Q--1100 AA	Quad channel tank alarm box

26 918SB/DB/QB Tank Alarm with Rotating Beacon	
918SB-1000 AA	Single channel tank alarm box
918DB-1100 AA	Dual channel tank alarm box
918QB-1100 AA	Quad channel tank alarm box

27 918TCPS Overfill & Interstitial Alarms		
918TCPS400 AA	SS 2" male thd. alarm box with 5' probe and part F & D	
918TCPS500 AA	SS 2" male thd., alarm box with 9½' probe and part F & D	
918TCPS800 AA	SS 2" female thd. alarm box with 5' probe and part A & D	
918TCPS900 AA	SS 2" female thd. alarm box with 9½' probe and part A & D	
918TCPS400 AS	SS 2" male thd., 5' sensor assembly with part F & D	
918TCPS500 AS	SS 2" male thd., 9½' sensor assembly with part F & D	
918TCPS800 AS	SS 2" female thd., 5' sensor assembly with part A & D	
918TCPS900 AS	SS 2" female thd., 9½' sensor assembly with part A & D	

28 924S Adjustable Level Sensors	
924S--0600 AS	6" SS sensor
924S--1200 AS	12" SS sensor
924S--2000 AS	20" SS sensor
924S--3000 AS	30" SS sensor

29 925S Multi-Level Sensors	
<i>Consult website for our entire offering of multi-level sensors.</i>	

MORRISON BROS. CO.

570 E. 7th Street | Dubuque, IA 52001
 t. 563.583.5701 | 800.553.4840 | f. 563.583.5028
 custserv@morbros.com | www.morbros.com