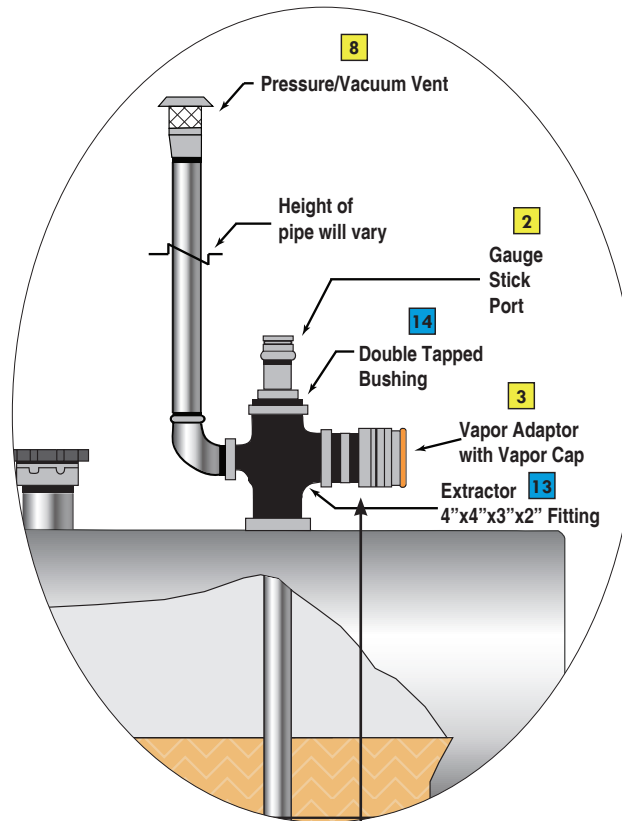
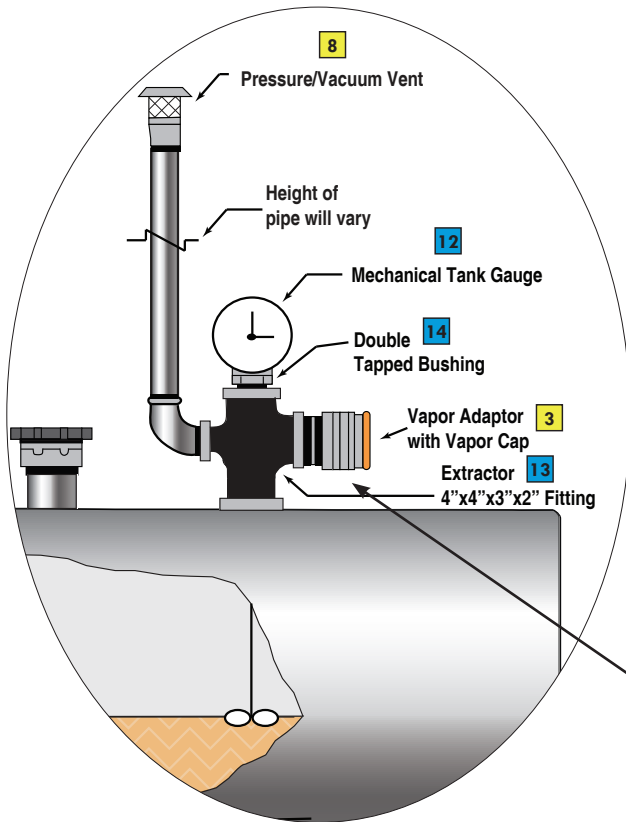


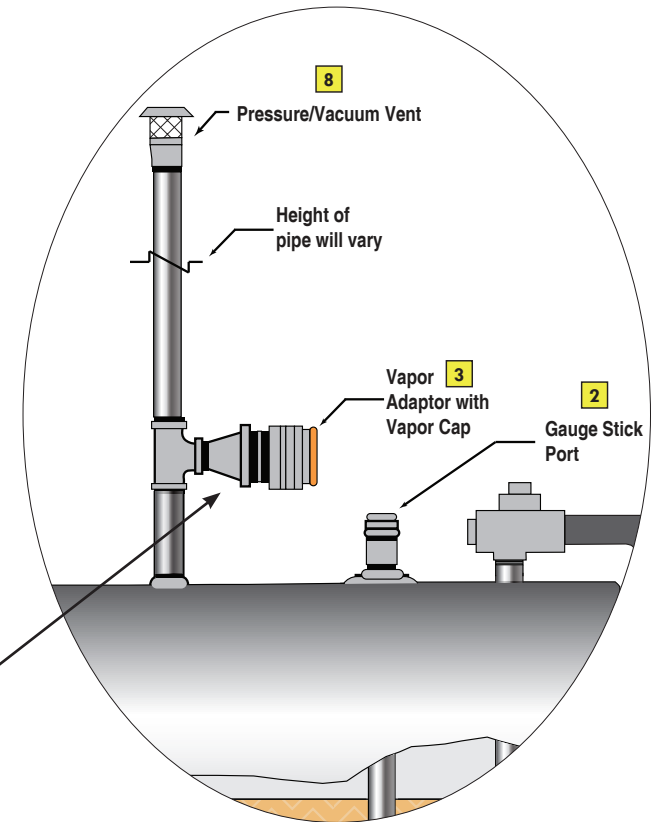
# Alternate Phase I Installation Configurations for Existing Aboveground Storage Tanks

## Vent, Vapor & Manual Gauge

### Vent, Vapor & Gauge



### Vent & Vapor



The diameter of the return vapor piping shall be greater than or equal to the diameter of the product drop tube.

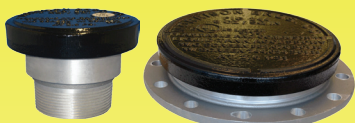
**CERTIFIED REQUIRED PRODUCTS**  
These products are required on gasoline Phase 1 EVR aboveground storage tank systems.

**CERTIFIED OPTIONAL PRODUCTS**  
These products are not required for EVR compliance; however, if a monitoring cap and adaptor, a drop tube diffuser, and/or a mechanical tank gauge are needed for a tank system, then these Morrison Bros. Co. CARB AST EVR products are required on the tank system.

**RECOMMENDED PRODUCTS**  
These products are not considered part of the Phase 1 EVR AST system certified by CARB but may be needed to complete a tank system.

## CERTIFIED REQUIRED PRODUCTS

**1** Fig. 244 Series Emergency Vent



**2** Fig. 305 Series Gauging Port Adaptor & Cap  
(Note: The mechanical gauge can be substituted for the gauge stick port.)

(Note: The mechanical gauge can be substituted for the gauge stick port.)



**3** Fig. 323/323C Series Vapor Adaptor & Cap



**4** Fig. 419 Series Drop Tube



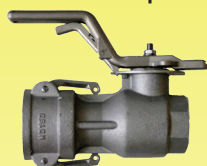
**5** Fig. 516 Series Spill Container



**6** Fig. 927/735DC Series Dry Disconnect Adaptor & Cap



**7** Fig. 928 Series Dry Disconnect Coupler



**8** Fig. 5885 Husky Series Pressure Vacuum Vent



**9** Fig. 9095 Series Overfill Prevention Valves



## CERTIFIED OPTIONAL PRODUCTS

**10** Fig. 305 Series Monitoring Adaptor & Cap



**11** Fig. 539 Series Drop Tube Diffuser



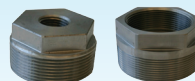
**12** Fig. 818, 818C, 918, 918C, & 918DP Series Mechanical Tank Gauge  
(Note: The mechanical gauge can be substituted for the gauge stick port.)



**13** Fig. 560, 561, 562, & 563 Series Extractors



**14** Fig. 184 & 184S Series Bushings



## RECOMMENDED PRODUCTS

**15** Fig. 78 Expansion Relief Valve

**16** Fig. 157 Suction Pipe Strainer

**17** Fig. 158 Series Vertical Check Valve

**18** Fig. 246A Series Swing Check Valve

**19** Fig. 284 Series Line Strainer

**20** Fig. 346 Series External Emergency Valve

**21** Fig. 515 Series Remote Fill Spill Container

**22** Fig. 715 Series Remote Fill Box

**23** Fig. 691 Series Ball Valve

**24** Fig. 710 Series Solenoid Valve

**25** Fig. 910 or 912 Series Anti-Siphon Valve

**26** Fig. 918 Alarm & Sensor

**27** Fig. 958 Series Check Valve

**28** Fig. 434/434S or 435 Dispenser Pedestal

**29** Fig. 610 Hose Retriever & 611 Hose Hanger

**30** Fig. 934 Single Poppet Foot Valve

**31** Fig. 446 Emergency Shut-Off Valve

**32** Fig. 924LS Liquid Sensor

**33** Fig. 925 Multi-Level Sensor

**34** Fig. 1218 Electronic Tank Gauge

**35** Fig. 636 Emergency Shut-Off Valve