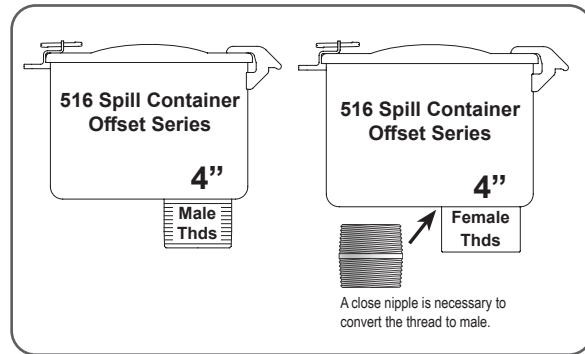




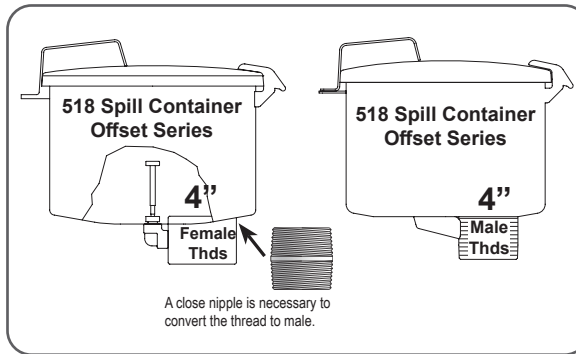
516 Spill Containers



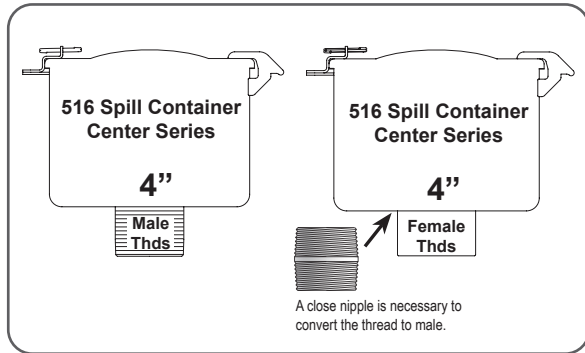
4" Offset Series		
9095AA0200 AV	9095X-2200 AV	9095C-5200AVEVR
9095AA4000 AV	9095X-2800 AV	9095C-AV0200 AV
9095AA5200AVEVR	9095C-0200 AV	9095CA5200AVEVR

Note: The dry disconnect model tops are only compatible with the 516 offset models.

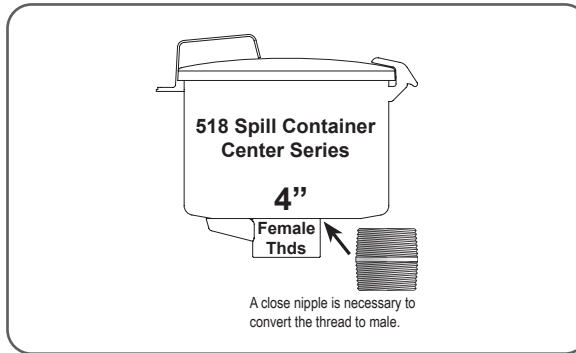
518 Spill Containers



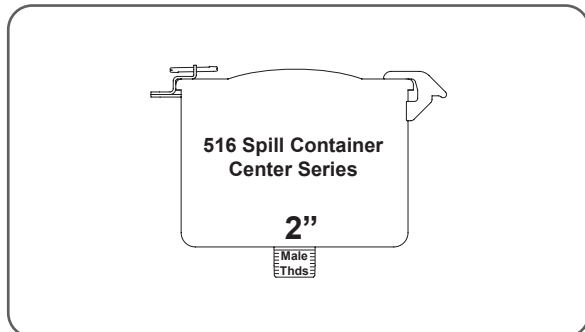
4" Offset Series		
9095AA0200 AV	9095X-2200 AV	9095C-5200AVEVR
9095AA4000 AV	9095X-2800 AV	9095C-AV0200 AV
9095AA5200AVEVR	9095C-0200 AV	9095CA5200AVEVR



4" Center Series		
9095AA0200 AV	9095X-2200 AV	9095C-0200 AV
9095AA4000 AV	9095X-2800 AV	9095C-AV0200 AV



4" Center Series		
9095AA0200 AV	9095X-2200 AV	9095C-0200 AV
9095AA4000 AV	9095X-2800 AV	9095C-AV0200 AV



2" Center Series
9095SA* (valve will fit if special cap 305C-0000 AC is used)



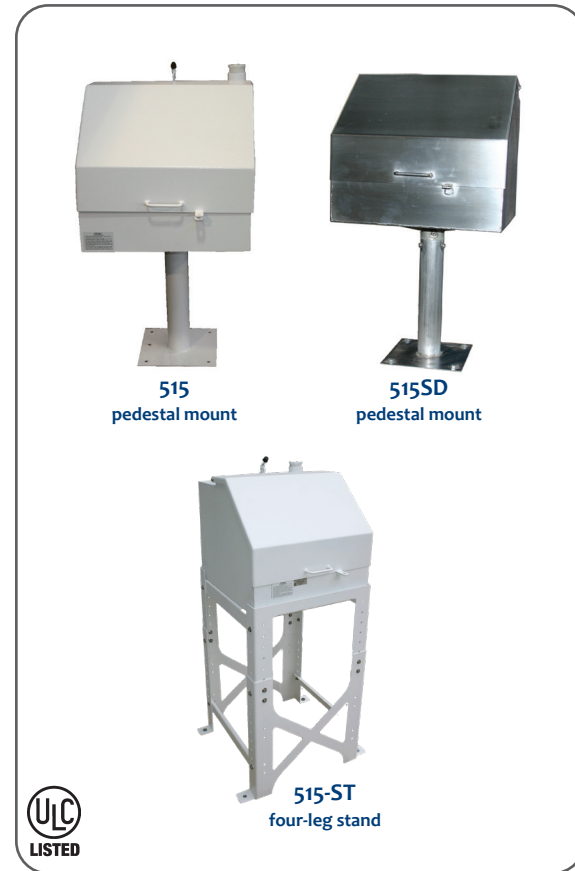
2" Center Series
9095SA & 9095SS: All Models

Note: The 518 is not currently approved by CARB due to the drain.

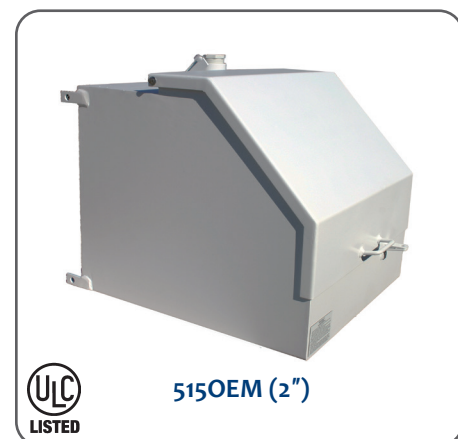
Spill Containers & Remote Fill Boxes



515 Series 15-Gallon Remote Spill Containers



515OEM 15-Gallon Remote Spill Container (Tank or Wall Mount)



516 Series 5-Gallon AST Spill Containers



517 Series 3½-Gallon AST Spill Containers



518 Series 7½-Gallon AST Spill Containers



Four-leg Stand



Item Number	Description
715--S400 AS	Four-leg Stand for 715 10-Gallon Remote Fill Box, Powder Coated Steel
715S--S400 AS	Four-Leg stand for 715 10-Gallon Remote Fill Box, Stainless Steel

Mounting Plate



Item Number	Description
715---0773 2K	Panel mounting kit, powder coated white, with nuts, screws & washers

Post Mount



Item Number	Description
715--P060 AK	3" x 60" Post mount kit, post with cap, base & U-bolts

Vapor Recovery Kit



Item Number	Description
715--VR30 AK	3" Vapor Recovery Kit, Includes Cap, Adaptor & 2 clamps
715--VR40 AK	4" Vapor Recovery Kit, Includes Cap, Adaptor & 2 clamps



External Options

Internal Options

← 715 - - T - - - - - 0 →

Model Number

Fill Box Construction

- F 7-gal. powder coated flush wall mount
- FS 7-gal. 304 stainless steel
- 10-gal. powder coated steel flush wall mount
- S 10-gal. 304 stainless steel

Mounting Style

- T Tank/Wall

Connection Location

- 0 No outlet
- B Bottom
- K Back
- F Flange
- T Top

Connection Thread Size

- 0 No outlet fitting
- 2 2" Male NPT nipple
- 3 3" Male NPT nipple
- 4 2" 150# Raised face flange
- 5 3" 150# Raised face flange

Component Size

- 0 Box only
- 2 2" components
- 3 3" components

Open

- 0 Box only

Hand Pump Assembly

- 0 No hand pump assembly
- B Base package*

* Hand pump assembly base package: Steel constructed hand pump with PTFE seals and FKM o-rings, reinforced polyurethane tubing, brass check valve and ball valve.

E85 Package

* Hand Pump Assembly E85 Package: Steel constructed hand pump with PTFE seals and FKM o-rings, reinforced polyurethane tubing, stainless steel check valve and ball valve.

Stainless Steel Package

* Hand Pump Assembly Stainless Steel Package: Stainless steel constructed hand pump with PTFE seals and FKM o-rings, reinforced polyurethane tubing, stainless steel check valve and ball valve.

B E

S



B

S



691 Ball Valve

691BSS Ball Valve

Ball Valve

- 0 Box only
- B Full port NPT ball valve with brass body, hard chrome plated ball & PTFE seals
- S Full port, locking, NPT ball valve with stainless steel body and ball, PTFE seals

Inlet Connection

- 0 Box only
- D Dry disconnect, hardcoated aluminum with stainless steel piston, FKM gaskets, and aluminum dust cap
- E Dry disconnect, stainless steel body and piston, FKM gasket, and stainless steel dust cap (only available in 2")
- Q 90° quick disconnect aluminum female coupler with stainless steel check valve, FKM seals, and aluminum dust plug
- S 90° quick disconnect stainless steel coupler with stainless steel check valve, FKM seals, and stainless steel dust plug
- M 90° quick disconnect aluminum male adaptor with stainless steel check valve, FKM seals, and aluminum dust cap

Dry Disconnect

D



927

E



927S

Quick Disconnect

Q S

M



Top Connection

715--TT2
715S--TT2

715--TF4
715S--TT3

715--TT3
715--TF5

Back Connection

715--TK2
715S--TK2

715--TK4
715S--TK3

715--TK3
715--TK5

In-wall, Back Connection

715F--TK2
715FS--TK2

Bottom Connection

715--TB2
715--TB3

Top Connection	
715--T00-0000-0	10-gal. Top connection with no outlets
715--TT3-0000-0	3" - 10-gal. Top connection with no internal components
715--TT3-000B-0	3" - 10-gal. Top connection with hand pump
715--TT3-2QBB-0	2" - 10-gal. Top connection, female quick disconnect with plug
715--TT3-2MBB-0	2" - 10-gal. Top connection, male quick disconnect with cap
715--TT3-3QBB-0	3" - 10-gal. Top connection, female quick disconnect with plug
715--TT3-3MBB-0	3" - 10-gal. Top connection, male quick disconnect with cap
715--TT3-2DBB-0	2" - 10-gal. Top connection, dry-disconnect with cap
715--TT3-3DBB-0	3" - 10 gal. Top connection, dry-disconnect with cap
715--TT3-2MB0-0	2" - 10-gal. Top connection, male quick disconnect with ball valve
715--TT3-3MB0-0	3" - 10-gal. Top connection, male quick disconnect with ball valve
715S-TT3-0000-0	3" - 10-gal. Stainless steel top connection with no internal components
715S-TT3-2QBB-0	2" - 10-gal. Stainless steel top connection, female quick disconnect with plug
715S-TT3-2MBB-0	2" - 10-gal. Stainless steel top connection, male quick disconnect with cap
715S-TT3-3QBB-0	3" - 10-gal. Stainless steel top connection, female quick disconnect with plug
715S-TT3-3MBB-0	3" - 10-gal. Stainless steel top connection, male quick disconnect with cap
715S-TT3-2DBB-0	2" - 10-gal. Stainless steel top connection, dry-disconnect with cap
715S-TT3-3DBB-0	3" - 10-gal. Stainless steel top connection, dry-disconnect with cap
715--TF4-0000-0	2" - 10-gal. Flanged top connection with no internal components
715S-TF4-0000-0	2" - 10-gal. SS flanged top connection with no internal components
715--TF5-0000-0	3" - 10 gal. Flanged top connection with no internal components
715S-TF5-0000-0	3" - 10-gal. SS flanged top connection with no internal components
715---VR30 AK	3" Vapor recovery kit
715---VR40 AK	4" Vapor recovery kit
715---P060 AK	60" Post mount kit
715---S400 AS	Four-leg stand, powder coated steel
715S--S400 AS	Four-leg stand, stainless steel

Bottom Connection	
715--TB2-0000-0	10-gal. Bottom connection with no internal components
715--TB3-0000-0	10-gal. Bottom connection with no internal components
715--TB2-2MBB-0	2" - 10-gal. Bottom connection, male quick disconnect with plug
715--TB2-2QBB-0	2" - 10-gal. Bottom connection, female quick disconnect with plug
715--TB3-0000-0	3" - 10-gal. Bottom connection with no internal components
715--TB4-0000-0	2" - 10-gal. Flanged bottom connection with no internal components
715--TB4-3DBB-0	2" - 10-gal. Flanged bottom connection, dry-disconnect with cap
715--TB5-0000-0	3" - 10-gal. Flanged bottom connection with no internal components
715--TB5-3DBB-0	3" - 10-gal. Flanged bottom connection, dry-disconnect with cap
715---S400 AS	Four-leg stand, powder coated steel
715S--S400 AS	Four-leg stand, stainless steel

Back Connection	
715--TK3-0000-0	10-gal. Back connection with no internal components
715--TK3-000B-0	10-gal. Back connection, fill box only with hand pump
715--TK3-2QBB-0	2" - 10-gal. Back connection, female quick disconnect with plug
715--TK3-2MBB-0	2" - 10-gal. Back connection, male quick disconnect with cap
715--TK3-3QBB-0	3" - 10-gal. Back connection, female quick disconnect with plug
715--TK3-3MBB-0	3" - 10-gal. Back connection, male quick disconnect with cap
715--TK3-2DBB-0	2" - 10-gal. Back connection, dry disconnect with cap
715--TK3-3DBB-0	3" - 10-gal. Back connection, dry disconnect with cap
715S-TK3-2SSS-0	2" - 10-gal. SS back connection, DEF, stainless steel female quick disconnect with plug
715S-TK3-2ESS-0	2" - 10-gal. SS back connection, DEF, stainless steel dry disconnect with cap
715S-TK3-3SS0-0	3" - 10-gal. SS back connection, DEF, stainless steel quick disconnect & stainless steel ball valve
715S-TK3-3SSS-0	3" - 10-gal. SS back connection, DEF, stainless steel female quick disconnect with plug
715S-TK3-3MBB-0	3" - 10-gal. SS back connection, male quick disconnect with cap
715S-TK3-3MS0-0	3" - 10-gal. SS back connection, male quick disconnect, SS ball valve
715--TK5-0000-0	3" - 10-gal. Flanged back connection with no internal components

In-wall, Back Connection	
715F-TK2-0000-0	2" - 7-gal. In-wall, back connection with no internal components
715F-TK2-2QBB-0	2" - 7-gal. In-wall, back connection, female quick disconnect with plug
715F-TK2-2MBB-0	2" - 7-gal. In-wall, back connection, male quick disconnect with cap
715F-TK2-2DBB-0	2" - 7-gal. In-wall, back connection, dry-disconnect with cap
715FS-TK2-2ES0	2" - 7-gal. SS in-wall, back connection, DEF, stainless steel dry-disconnect & stainless steel ball valve
715FS-TK2-2DBB	2" - 7-gal. SS in-wall, back connection, dry disconnect with cap
715FS-TK2-2SS0	SS in-wall, back connection, DEF, stainless steel quick disconnect & stainless steel ball valve

15-Gallon Remote Spill Containers	
515---0200 AC	2" - 15-gal. AST Remote Spill Container, Female Threaded, Post Mount
515---0300 AC	3" - 15-gal. AST Remote Spill Container, Female Threaded, Post Mount
515---0400 AC	4" - 15-gal. AST Remote Spill Container, Female Threaded, Post Mount
515---2200 AC	2" & 2" - 15-gal. AST Remote Spill Container Dual Ports, Female Threaded, Post Mount
515---2300 AC	3" & 3" - 15-gal. AST Remote Spill Container Dual Ports, Female Threaded, Post Mount
515---3200 AC	3" & 2" - 15-gal. AST Remote Spill Container Dual Ports, Female Threaded, Post Mount
515-ST0200 AC	2" - 15-gal. Remote Spill Container, 1 Port with four-leg stand
515-ST0300 AC	3" - 15-gal. Remote Spill Container, 1 Port with four-leg stand
515-ST0400 AC	4" - 15-gal. Remote Spill Container, 1 Port with four-leg stand
515-ST2200 AC	2" & 2" - 15-gal. Remote Spill Container, 2 Port with four-leg stand
515-ST2300 AC	3" & 3" - 15-gal. Remote Spill Container, 2 Port with four-leg stand
515-ST3200 AC	3" & 2" - 15-gal. Remote Spill Container, 2 Port with four-leg stand
515ST-0100 AS	Four-leg adjustable stand, powder coated
515SD-0200 AC	2" - 15-gal. AST Remote Spill Container, Female Threaded, SS, with Sump Drain, Post Mount
515SD-0300 AC	3" - 15-gal. AST Remote Spill Container, Female Threaded, SS, with Sump Drain, Post Mount
515SD-0400 AC	4" - 15-gal. AST Remote Spill Container, Female Threaded, SS, with Sump Drain, Post Mount
515SDST0200 AC	2" - 15-gal. Remote Spill Container, with sump with Four-leg SS stand
515SDST0300 AC	3" - 15-gal. Remote Spill Container, with sump with Four-leg SS stand
515SDST0400 AC	4" - 15-gal. Remote Spill Container, with sump with Four-leg SS stand
515SD-0200 ACO	NO post or stand
515SD-0300 ACO	NO post or stand
515SD-0400 ACO	NO post or stand
515SD-2200 ACO	NO post or stand
515SD-2300 ACO	NO post or stand
515STS0100 AS	Four-leg adjustable stand, stainless steel

15-Gallon Remote Spill Containers	
515OEM0200 AC	2" - 15-gal. Top Mount AST Remote Spill Container, Less Pedestal
515OEM0300 AC	3" - 15-gal. Top Mount AST Remote Spill Container, Less Pedestal

5-Gallon Spill Containers	
516--0200 ACPW	2" - 5-gal. Female, Spill Container, No Drain, Centered, Coated White
516--0400 ACPW	4" - 5-gal. Female, Spill Container, No Drain, Centered, Coated White
516D--0200 ACPW	2" - 5-gal. Female, Spill Container, with Drain, Centered, Coated White
516D--0400 ACPW	4" - 5-gal. Female, Spill Container, with Drain, Centered, Coated White
516M--0200 ACPW	2" - 5-gal. Male, Spill Container, No Drain, Centered, Coated White
516M--0400 ACPW	4" - 5-gal. Male, Spill Container, No Drain, Centered, Coated White
516MD-0200 ACPW	2" - 5-gal. Male, Spill Container, with Drain, Centered, Coated White
516MD-0400 ACPW	4" - 5-gal. Male, Spill Container, with Drain, Centered, Coated White
516MO-0200 ACPW	2" - 5-gal. Male, Spill Container, No Drain, Offset, Coated White
516MO-0400ACEVR	4" - 5-gal. Male, Spill Container, No Drain, Offset, Coated White, CARB EVR Approved
516MOD0200 ACPW	2" - 5-gal. Male, Spill Container, with Drain, Offset, Coated White
516MOD0400 ACPW	4" - 5-gal. Male, Spill Container, with Drain, Offset, Coated White
516MWO0200 ACPW	2" - 5-gal. Male, Spill Container, with Screen, Coated White
516O--0400ACEVR	4" - 5-gal. Female, Spill Container, No Drain, Offset, Coated White, CARB EVR Approved
516OD-0200 ACPW	2" - 5-gal. Female, Spill Container, with Drain, Offset, Coated White
516OD-0400 ACPW	4" - 5-gal. Female, Spill Container, with Drain, Offset, Coated White

3.5-Gallon AST Spill Containers	
517--0100 AC	2" - 3.5-gal. AST Spill Container, Male Threaded (White)
517--0200 AC	4" - 3.5-gal. AST Spill Container, Male Threaded (White)
517F--0100 AC	2" - 3.5-gal. AST Spill Container, Female Threaded (White)
517F--0200 AC	4" - 3.5-gal. AST Spill Container, Female Threaded (White)
517WO-0100 AC	2" - 3.5-gal. AST Spill Container, Male Thread with Screen (White)

7.5-Gallon AST Spill Containers	
518--0100 AC	4" - 7.5-gal. AST Spill Container with Drain, Female Threads, Offset Mount (White)
518CC-0100 AC	4" - 7.5-gal. AST Spill Container with Drain, Female Threads, Center Mount (White)
518M--0100 AC	4" - 7.5-gal. AST Spill Container with Drain, Male Threads, Offset Mount (White)
518M--0200 AC	2" - 7.5-gal. AST Spill Container with Drain, Male Threads, Offset Mount (White)