



Model 9095AA 3" Overfill Prevention Valve

SPECIFICATION SHEET

Application

The 9095AA series overfill prevention valve is designed to prevent the overfilling of liquid storage tanks by providing a positive shut-off during a pressurized fill.

Features and Details

- Installs on tank top by threading onto a 6" male NPT riser
- Direct fill adaptor has 3" male quick disconnect
- Remote adaptor has 3" female NPT inlet threads for piping to remote fill point
- Full flow until shut-off point
- 1.23" of float height adjustment
- Integral pressure relief
- Integral anti-siphon function
- Optional test mechanism
- Drop tube adaptor accepts 3" drop fill tubes (Morrison 419)

Materials of Construction

- Direct fill adaptor... passivated aluminum
- Remote adaptor... ductile iron, powder coated
- Body... passivated aluminum
- Shaft, linkage, and hardware... stainless steel
- Lower pipe... e-coated steel
- Drop tube adaptor... passivated aluminum

Operational Criteria

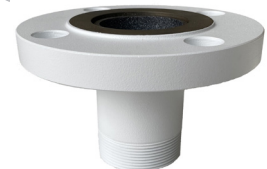
- Minimum 5 PSI flow requirements
- Maximum operating pressure is 100 PSI
- Maximum viscosity of 300 centistokes
- A tight fill connection is required for the valve to operate
- The estimated flow rate is 560 GPM at 10 PSI pressure drop (See flow curve)

Code Compliance

ULC-S661-10 listed, NFPA 30, 30A, UFC, IFC, PEI/ RP200, PEI/RP 600, and Florida DEP EQ-851. California EVR models available



9095AA0300 (3")



9095AF (3")

NOTE

For use on clean liquids only.

Item numbers and flow curve on next page.



MORRISON BROS. CO.



Item Number	Size	Description	Weight (lbs)
9095AA0300 AV	3"	AST overfill prevention valve, aluminum body, with 3" male quick disconnect x 6" female threads	21
EVR 9095AA3300AVEVR	3"	AST overfill prevention valve, aluminum body with 3" female threaded x 6" Female threaded connections; CARB EVR approved	30
EVR 9095AA9300AVEVR	3"	AST overfill prevention valve, aluminum body, less top connection; CARB EVR approved	14.4
9095ATM0100 AM	2" & 3"	Mechanical test mechanism kit	1
NEW! 9095AF3301 AAPW	3"	Adaptor 3" male thread to 3" raised face flange (for use with 9095AA3300AVEVR)	11.1

