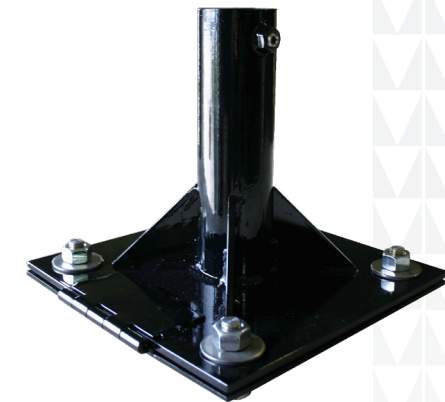


## Replacement Parts:

Item Number	Description	Weight (lbs)
<b>610</b>		
610--0103 AK	Single weight kit	11
610--0104 AK	3" OD aluminum pulley	N/A
610--0105 AC	20' replacement cable and four clamps	1
610--0125 2S	Strap for urethane hose hanger	N/A
610--0203 AK	Two weight kit	21
610B--0100 WAPB	Standard base, coated, 2" threads	6.3
610B--0303 AK	Anchor bolt for square base	N/A
<b>610X</b>		
610X--0101 21	2" aluminum post, 80" long	N/A
610X--0101 21PB	2" aluminum post, 80" long, coated black	N/A
610X--0104 MBA	Anodized aluminum post	N/A
610X--0105 AK	Hose clamp ¾"	0.2
610X--0106 AK	Hose clamp 1"	0.2
610X--0114 APPB	Post kit and coupler, powder coated black	N/A
610X--0201 21	2" aluminum post, 100" long	N/A
610SC-0100 AK	Stabilizer clamp (2" pipe) with threaded rod	1

 MORRISON BROS. CO.

# 610 & 611 Hose Retriever Series



 MORRISON BROS. CO.

570 E. 7th Street | Dubuque, IA 52001  
t. 563.583.5701 | 800.553.4840 | f. 563.583.5028  
custserv@morbros.com | www.morbros.com





Fig. 610

The **610 hose retriever** suspends the fueling hose above the dispenser eliminating kinks and tangles while keeping the hose up off the drive. The 360 degree smooth rotating retriever head assists the operator in positioning the hose to the fueling point. The hose retriever reduces safety hazards at the fueling point and eliminates hose wear.

A heavy duty steel base is available to simplify retrofit installations saving time and money. Two 10-pound counterweights connect via stainless steel cable making for low maintenance and trouble-free counter movement. Extra weights are available to counter balance larger diameter hoses.

**Construction Details for Hose Retriever**

- Cast iron head (E-coated black)
- Stainless steel cable and connectors
- Aluminum pulley
- Stainless steel ball bearing swivel
- Installs on 2" Schedule 80 pipe (installer supplied)

Item Number	Description	Weight Kit	Hose Hanger/Hosebun	Base	Weight (lbs)
610--0000 AR	Hose retriever assembly, less weights and cable	N	N	N	7.10
610--0100 AR	Hose retriever assembly, with weight kit	Y	N	N	27.0
610B--0000 AR	Hose retriever assembly, with weight kit and standard base	Y	N	Y	33.30
610--0103 AK	Single weight kit (if additional weights are needed)	Y	N	N	11.0
610--0203 AK	Double weight kit (if additional weights are needed)	Y	N	N	21.0



Fig. 610 Standard Base  
610B--0100 WAPB

The **610 standard base** simplifies the anchoring process of a 610 hose retriever by eliminating the need to break concrete. The **610 hinged base** allows the hose retriever to be tilted 90° to grade level for installation and service.

**Features of Hinged Base**

Reduces installation time  
Inspection and service are easier and safer from grade level

**Construction Details**

**Hinged Base**

Steel, powder coated black  
Set screws are stainless steel  
Hinge is stainless steel

**Standard Base**

Steel, powder coated black

**Square Base**

Steel, powder coated black  
Set screws... stainless steel

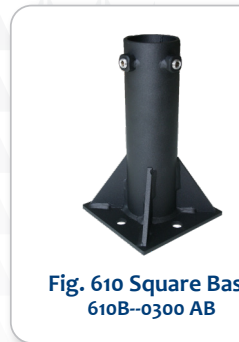


Fig. 610 Square Base  
610B--0300 AB

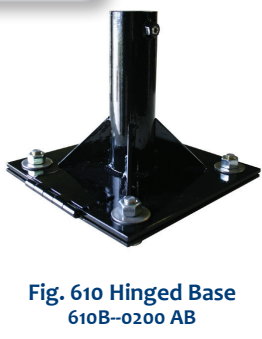


Fig. 610 Hinged Base  
610B--0200 AB

Item Number	Description	Weight Kit	Hose Hanger/Hosebun	Base	Weight (lbs)
610B--0100 WAPB	Standard base (threaded) assembly, powder coated black	N	N	Y	5.30
610B--0200 AB	Hinged base assembly, powder coated black	N	N	Y	24.0
610B--0300 AB	6x6 square base (slip-fit) assembly, powder coated black	N	N	Y	8.65
610--0123 AK	Anchor bolt kit, stainless steel, (four 5/8" bolts, nuts, and fender washers) for standard and hinged base				
610B--0303 AK	Anchor bolt kit, stainless steel, (four 1/2" bolts, nuts, and fender washers) for 6x6 square base				

**Hose Retriever kits (continued):**

**610HH Kits**

Item Number	Description	Weight Kit	Hose Hanger	Base	Weight (lbs)
610HH-0100 AR	Hose retriever assembly, with 1" 611 aluminum hose hanger and weight kit	Y	1"	N	30.50
610HH-0150 AR	Hose retriever assembly, with 1 1/4" to 1 1/2" 611 aluminum hose hanger and weight kit	Y	1 1/4"-1 1/2"	N	31.50
610HH-0200 AR	Hose retriever assembly, with 2" 611 aluminum hose hanger and weight kit	Y	2"	N	32.50

**Includes:**



Retriever Head



Hose Hanger

Available sizes: 1", 1 1/4"-1 1/2", and 2".

**610HBB Kits**

Item Number	Description	Weight Kit	Hose Hanger	Base	Weight (lbs)
610HBB0100 AR	Hose retriever with base, with 1" 611 aluminum hose hanger and weight kit	Y	1"	Y	36.80
610HBB0150 AR	Hose retriever with base, with 1 1/4" to 1 1/2" 611 aluminum hose hanger and weight kit	Y	1 1/4"-1 1/2"	Y	37.80
610HBB0200 AR	Hose retriever with base, with 2" 611 aluminum hose hanger and weight kit	Y	2"	Y	38.80

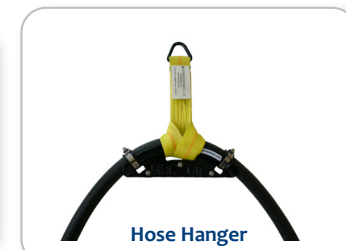
**Includes:**



Retriever Head



Standard Base



Hose Hanger

Available sizes: 1", 1 1/4"-1 1/2", and 2".

**610HBBH Kits**

Item Number	Description	Weight Kit	Hose Hanger	Base	Weight (lbs)
610HBBH0100 AR	Hose retriever with hinged base, with 1" 611 aluminum hose hanger and weight kit	Y	1"	Y	54.80
610HBBH0150 AR	Hose retriever with hinged base, with 1 1/4" to 1 1/2" 611 aluminum hose hanger and weight kit	Y	1 1/4"-1 1/2"	Y	55.80
610HBBH0200 AR	Hose retriever with hinged base, with 2" 611 aluminum hose hanger and weight kit	Y	2"	Y	56.80

**Includes:**



Retriever Head



Hinged Base



Hose Hanger

Available sizes: 1", 1 1/4"-1 1/2", and 2".

## Hose Retriever kits:

### 610H Kits

Item Number	Description	Weight Kit	Hosebun	Base	Weight (lbs)
610H-0100 AR	Hose retriever assembly, with ¾" or 1" 610 urethane hose hanger and weight kit	Y	¾" or 1"	N	30.50
610H-0125 AR	Hose retriever assembly, with 1¼" Hosebun™ and weight kit	Y	1¼"	N	31.0
610H-0150 AR	Hose retriever assembly, with 1½" Hosebun™ and weight kit	Y	1½"	N	31.50
610H-0200 AR	Hose retriever assembly, with 2" Hosebun™ and weight kit	Y	2"	N	32.50
610H-0300 AR	Hose retriever assembly, with 3" Hosebun™ and weight kit	Y	3"	N	33.0

### Includes:



### 610HB Kits

Item Number	Description	Weight Kit	Hosebun	Base	Weight (lbs)
610HB-0100 AR	Hose retriever assembly with standard base and ¾" or 1" 610 urethane hose hanger and weight kit	Y	¾" or 1"	Y	36.80
610HB-0125 AR	Hose retriever assembly with standard base and 1¼" Hosebun™ and weight kit	Y	1¼"	Y	37.30
610HB-0150 AR	Hose retriever assembly with standard base and 1½" Hosebun™ and weight kit	Y	1½"	Y	37.80
610HB-0200 AR	Hose retriever assembly with standard base and 2" Hosebun™ and weight kit	Y	2"	Y	38.80
610HB-0300 AR	Hose retriever assembly with standard base and 3" Hosebun™ and weight kit	Y	3"	Y	39.30

### Includes:



The proper way to cradle a hose while suspended from a hose retriever is with a Hose Hanger or a Hosebun.

The **611 hose hanger** supports the bend radius, protecting the hose from kinking. This product is easy to install and is the most economical choice!

### Features

- Durable construction
- Economical
- Extends life of the hose

### Construction Details

#### 611

- Cast aluminum, powder coated
- Stainless steel hardware
- Nylon spacers (1¼"-2" size)
- Stainless steel D-ring
- UV resistant polyester sling
- Stainless steel hose clamps with hose protectors

Item Number	Description	Weight Kit	Hose Hanger	Base	Weight (lbs)
611---0100 AH	611 aluminum hose hanger with sling	N	1"	N	3.0
611---0150 AH	611 aluminum hose hanger with sling	N	1¼"-1½"	N	3.75
611---0200 AH	611 aluminum hose hanger with sling	N	2"	N	4.0

The **610 hose hanger and Hosebun™** protects the bending radius, protecting the hose from kinking. This product is easy to install and has a 5-1 safety factor.

### Construction Details for Hosebun

- Urethane hosebun
- Nylon sling

Item Number	Description	Weight Kit	Hosebun	Base	Weight (lbs)
610HGR0100 AH	610 ¾" to 1" hose hanger with sling	N	¾" to 1"	N	3.50
610BUN0125 1B	Hosebun™, 1¼" (black)	N	1¼"	N	3.25
610BUN0150 1B	Hosebun™, 1½" (black)	N	1½"	N	3.75
610BUN0200 1B	Hosebun™, 2" (black)	N	2"	N	4.0
610BUN0300 1B	Hosebun™, 3" (black)	N	3"	N	4.25



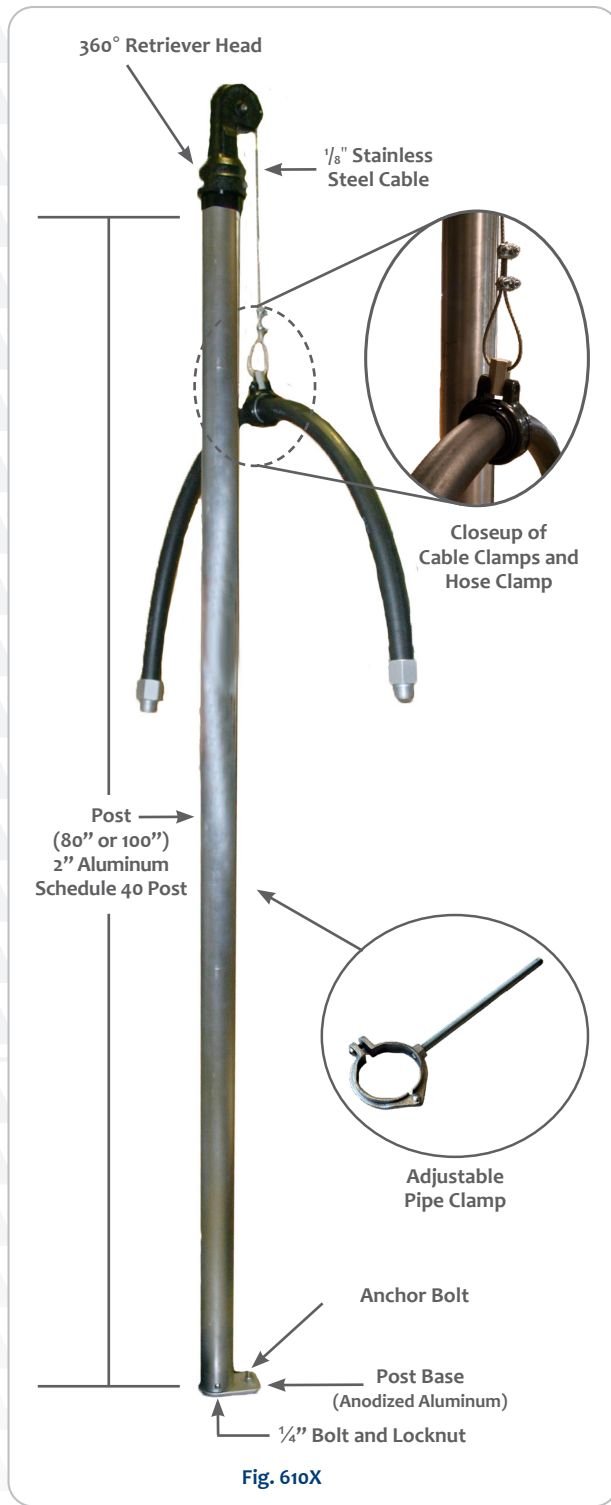


Fig. 610X

The **610X hose retriever** assembly suspends the fueling hose above the dispenser eliminating kinks and tangles while keeping the hose off the drive. The 610X is a complete assembly!

**Features**

- Smooth operation—counterweight assemblies matched with specified hose diameters and lengths
- 360° rotating retriever head assists the operator in positioning the hose to the fueling point
- Pre-cut post and all required components included
- Minimal maintenance—durable construction and minimal moving parts

**Construction Details**

- Cast iron retriever head (e-coated black)
- Stainless steel cable and connectors
- Aluminum pulley
- Stainless steel ball bearing swivel
- Passivated aluminum mounting base with 3/8-16x2 3/4 stainless steel anchor bolts
- Aluminum schedule 40 post (A) (powder coated black (B) optional) included
- Steel counterweights
- Plastic hose clamp (3/4" or 1" sizes) with stainless steel connector
- Adjustable pipe clamp secures post to dispenser

Item Number	Post	Hose I.D.	Hose Length	Counter Weight	Max Hose O.D.	Overall Height	Shipping Weight
610X-0100 AR	A	3/4"	12'-14'	10 lbs	1 1/8"	90"	27 lbs
610X-0200 AR	A	3/4"	15'-20'	12 lbs	1 1/8"	110"	31 lbs
610X-0300 AR	A	1"	12'-14'	14 lbs	1 3/8"	90"	31 lbs
610X-0400 AR	A	1"	15'-18'	17 lbs	1 3/8"	110"	36 lbs
610X-0500 AR	A	Coaxial	11'-13'	17 lbs	Coaxial	90"	34 lbs

Hose clamps not included with the Coaxial model.

Item Number	Coated Post Option	Hose I.D.	Hose Length	Counter Weight	Max Hose O.D.	Overall Height	Shipping Weight
610X-0100 ARP	B	3/4"	12'-14'	10 lbs	1 1/8"	90"	27 lbs
610X-0200 ARP	B	3/4"	15'-20'	12 lbs	1 1/8"	110"	31 lbs
610X-0300 ARP	B	1"	12'-14'	14 lbs	1 3/8"	90"	31 lbs
610X-0400 ARP	B	1"	15'-18'	17 lbs	1 3/8"	110"	36 lbs
610X-0500 ARP	B	Coaxial	11'-13'	17 lbs	Coaxial	90"	34 lbs

Hose clamps not included with the Coaxial model.

Note: Packaged in two boxes

Note: Hose not included.

The **610XB** includes a square base (rather than the post base used in the 610X) and does not include an adjustable pipe clamp.

**Features**

- Smooth operation—counterweight assemblies matched with specified hose diameters and lengths
- 360° rotating retriever head assists the operator in positioning the hose to the fueling point
- Pre-cut post and all required components included
- Minimal maintenance—durable construction and minimal moving parts
- Comes with square base

**Construction Details**

- Cast iron retriever head (e-coated black)
- Stainless steel cable and connectors
- Aluminum pulley
- Stainless steel ball bearing swivel
- Aluminum schedule 40 post (A), (powder coated black (B) optional) included
- Steel counterweights
- Plastic hose clamp (3/4" or 1" sizes) with stainless steel connector
- Cast iron adjustable stabilizer brackets (zinc plated)

Item Number	Post	Hose I.D.	Hose Length	Counter Weight	Max Hose O.D.	Overall Height	Shipping Weight
610XB-0100 AR	A	3/4"	12'-14'	10 lbs	1 1/32"	90"	42 lbs
610XB-0200 AR	A	3/4"	15'-20'	12 lbs	1 1/32"	110"	46 lbs
610XB-0300 AR	A	1"	12'-14'	14 lbs	1 3/8"	90"	46 lbs
610XB-0400 AR	A	1"	15'-18'	17 lbs	1 3/8"	110"	51 lbs
610XB-0500 AR	A	Coaxial	11'-13'	17 lbs	Coaxial	90"	49 lbs
610XB-0600 AR	A	Coaxial	13'-15'	17 lbs	Coaxial	110"	51 lbs

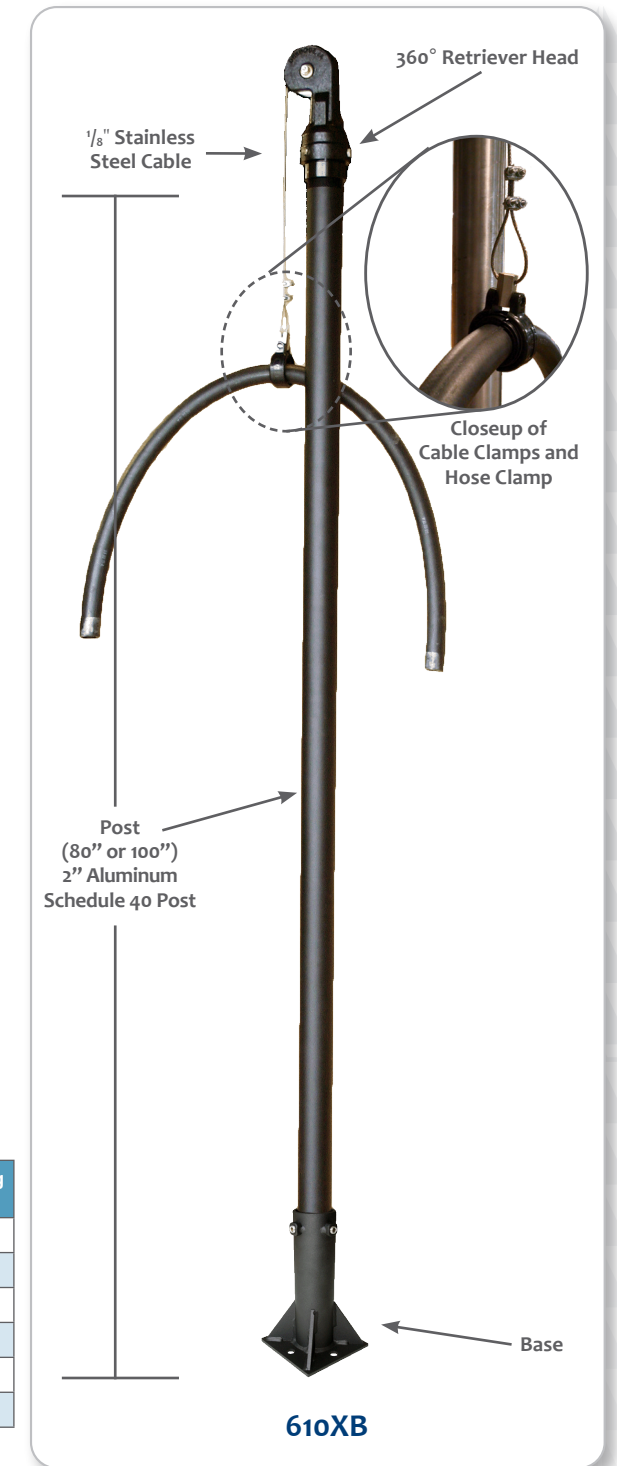
Hose clamps not included with the Coaxial model.

Item Number	Coated Post Option	Hose I.D.	Hose Length	Counter Weight	Max Hose O.D.	Overall Height	Shipping Weight
610XB-0100 ARP	B	3/4"	12'-14'	10 lbs	1 1/32"	90"	42 lbs
610XB-0200 ARP	B	3/4"	15'-20'	12 lbs	1 1/32"	110"	46 lbs
610XB-0300 ARP	B	1"	12'-14'	14 lbs	1 3/8"	90"	46 lbs
610XB-0400 ARP	B	1"	15'-18'	17 lbs	1 3/8"	110"	51 lbs
610XB-0500 ARP	B	Coaxial	11'-13'	17 lbs	Coaxial	90"	49 lbs
610XB-0600 ARP	B	Coaxial	13'-15'	17 lbs	Coaxial	110"	51 lbs

Hose clamps not included with the Coaxial model.

Note: Packaged in two boxes

Note: Hose not included.



610XB