



Model 519 Watertight Test Well Manhole

SPECIFICATION SHEET

Application

Provides access to monitoring well when proper identification of the opening and watertight features are essential.

Features and Details

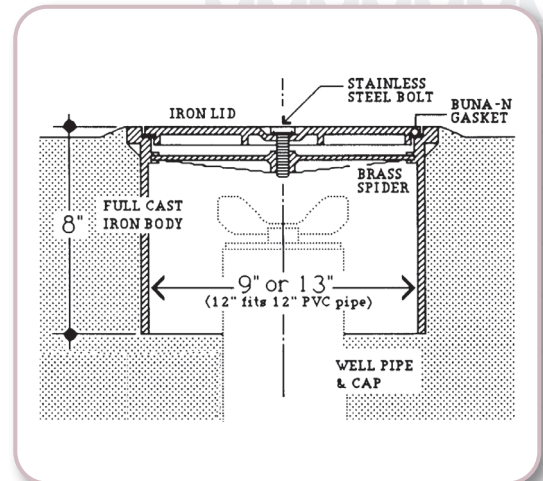
- Black triangle on white warning label permanently attached to cover
- “Test Well” permanently cast into cover on 12” models
- “Monitoring Well” permanently cast into cover on 9” models
- Brass plate attached to ring to stamp well identification number
- Watertight one-piece cast ring and skirt
- Easy to replace gasket installs in cover, no glue required
- Center bolt stays in the cover and includes an o-ring to keep surface water out
- Three spoke spider provides center point for bolt to evenly tighten down the cover to the ring

Materials of Construction

- Cast iron body/ring and cover
- Buna-N gasket and o-ring
- Brass center spokew
- Stainless steel bolt

Certifications and Listings

- Meets H-20 load requirements



Item Number	Size	Weight (lbs)
519---0100 AM	9"	32.0
519---0200 AM	12"	67.0



MORRISON BROS. CO.

570 E. 7th Street | Dubuque, IA 52001
 t. 563.583.5701 | 800.553.4840 | f. 563.583.5028
 www.morbros.com