

# Model 184 Series Bushings & Plugs

SPECIFICATION SHEET

## Application

Double Tapped Bushings are used in pipe and tank fittings to reduce or adapt connections. The outside threads are male. The inside threads (threaded from the top and from the bottom) are female.

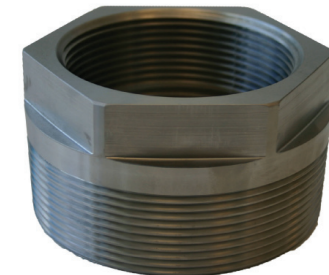
The 184S Double Tapped Bushings are the same as the 184 except they are constructed of stainless steel.



184



184S (2'')



184S (4'')

### SPECIFICATION OPTIONS:

- A**—Size: Male NPT x Female NPT x Female NPT
- B**—Zinc plated cast iron (Z), cast iron (CI), steel (S), or stainless steel (SS)
- C**—Brass tubing connectors:  
Yes (Y)  
No (N)  
Not applicable (N/A)
- Weight**—Shipping weight (lbs)

Item Number	Description	A	B	C	Weight
184---0000 1B	Double Tapped Bushing	1½" x ¾" x ¾"	CI	N/A	0.60
184---0100 1B	Double Tapped Bushing	2" x ¾" x ¾"	CI	N/A	1.0
184---0110 1B	Double Tapped Bushing	1½" x ½" x ½"	CI	N/A	0.50
184---0120 1B	Double Tapped Bushing	1¼" x 1" x 1"	CI	N/A	0.40
184---0130 1B	Double Tapped Bushing	1½" x 1" x 1"	CI	N/A	0.70
184---0200 1B	Double Tapped Bushing	2" x ½" x ½"	CI	N/A	0.80
184---0300 1B	Double Tapped Bushing	2" x ¾" x ¾"	CI	N/A	0.80
184---0400 1B	Double Tapped Bushing	2" x 1" x 1"	CI	N/A	1.20
184---0500 1B	Double Tapped Bushing	2" x 1¼" x 1¼"	CI	N/A	1.10
184---0600 1B	Double Tapped Bushing	2" x 1½" x 1½"	CI	N/A	0.90
184---0800 1B	Double Tapped Bushing	2½" x 1¼" x 1¼"	CI	N/A	1.60
184---0900 1B	Double Tapped Bushing	2½" x 1½" x 1½"	CI	N/A	1.80
184---1000 1B	Double Tapped Bushing	2½" x 2" x 2"	CI	N/A	1.0
184---1100 1B	Double Tapped Bushing	3" x 1" x 1"	CI	N/A	1.60
184---1200 1B	Double Tapped Bushing	3" x 1¼" x 2½"	CI	N/A	2.30
184---1300 1B	Double Tapped Bushing	3" x 1½" x 1½"	CI	N/A	2.20
184---1400 MB	Double Tapped Bushing	3" x 2" x 2"	CI	N/A	2.20
184---1500 1B	Double Tapped Bushing	3" x 2½" x 2½"	S	N/A	1.90
184---1800 1B	Double Tapped Bushing	3½" x 1½" x 1½"	CI	N/A	2.0
184---1900 1B	Double Tapped Bushing	3½" x 2" x 2"	CI	N/A	2.10
184---2100 1B	Double Tapped Bushing	3½" x 3" x 3"	S	N/A	2.40
184---2200 MB	Double Tapped Bushing	4" x 1" x 1"	CI	N/A	4.30
184---2300 MB	Double Tapped Bushing	4" x 1¼" x 1¼"	CI	N/A	4.0
184---2400 MB	Double Tapped Bushing	4" x 1½" x 1½"	CI	N/A	3.80
184---2500 MB	Double Tapped Bushing	4" x 2" x 2"	CI	N/A	3.60
184---2600 1B	Double Tapped Bushing	4" x 2½" x 2½"	CI	N/A	4.80
184---2700 MB	Double Tapped Bushing	4" x 3" x 3"	CI	N/A	3.70
184---2800 MB	Double Tapped Bushing	6" x 3" x 3"	CI	N/A	8.35
184---2900 1B	Double Tapped Bushing	6" x 4" x 4"	CI	N/A	8.50
184S--0200 MB	Double Tapped Bushing	2" x ½" x 5"	SS	N/A	0.75
184S--0300 MB	Double Tapped Bushing	2" x ¾" x ¾"	SS	N/A	0.75
184S--0400 MB	Double Tapped Bushing	2" x 1" x 1"	SS	N/A	0.75
184S--0500 MB	Double Tapped Bushing	2" x 1½" x 1½"	SS	N/A	0.75
184S--2100 MB	Double Tapped Bushing	4" x ¾" x ¾"	SS	N/A	4.25
184S--2200 MB	Double Tapped Bushing	4" x 1" x 1"	SS	N/A	4.25
184S--2400 MB	Double Tapped Bushing	4" x 1½" x 1½"	SS	N/A	4.25
184S--2500 MB	Double Tapped Bushing	4" x 2" x 2"	SS	N/A	4.25
184S--2700 MB	Double Tapped Bushing	4" x 3" x 3"	SS	N/A	4.25

184D and 184Q on next page...



**Application**

The Duplex Bushings (184D) are used to convert a single tank opening to dual threaded openings. One opening is single tapped and the other is double tapped.

The Quad Tapped Bushings (184Q) are similar to the Duplex Bushings except both female openings are threaded from the top and threaded from the bottom.



Item Number	Description	A	B	C	Weight
184D--0100 1B	Duplex Bushing	2"x $\frac{3}{8}$ "x $\frac{3}{8}$ "	Z	Y	0.80
184D--0200 1B	Duplex Bushing	2"x $\frac{1}{2}$ "x $\frac{1}{2}$ "	Z	Y	0.70
184D--0300 AB	Duplex Bushing	4"x $\frac{3}{4}$ "x $\frac{3}{4}$ "	CI	Y	4.60
184D--0301 MB	Duplex Bushing	4"x $\frac{3}{4}$ "x $\frac{3}{4}$ "	CI	N	4.10
184D--0401 MB	Duplex Bushing	4"x1"x1"	CI	N	3.60
184Q--4075 MB	Quad Tapped Bushing	4x $\frac{3}{4}$ "x $\frac{3}{4}$ "	CI	N	5.25
184Q--4100 MB	Quad Tapped Bushing	4"x1"x1"	CI	N	5.25
184---2900 1P	Pipe Plug	6"	CI	N/A	8.0
184---3000 1P	Pipe Plug	4"	CI	N/A	3.0
184---3100 1P	Pipe Plug	3"	CI	N/A	1.90
184---3200 1P	Pipe Plug	2"	CI	N/A	0.80
184---3300 1P	Pipe Plug	1 $\frac{1}{2}$ "	CI	N/A	0.50
184---3400 1P	Pipe Plug	1"	CI	N/A	0.30
184---3500 1P	Pipe Plug	$\frac{3}{4}$ "	CI	N/A	0.20
184S--3000 MP	Pipe Plug	4"	SS	N/A	3.40
184S--3200 MP	Pipe Plug	2"	SS	N/A	5.0
912-070512 MP	Pipe Plug	$\frac{3}{4}$ "	SS	N/A	0.50
912-100512 MP	Pipe Plug	1"	SS	N/A	0.80
912B070512 MP	Pipe Plug	$\frac{3}{4}$ " (BSP)	SS	N/A	0.50
912B100512 MP	Pipe Plug	1" (BSP)	SS	N/A	0.80

**SPECIFICATION OPTIONS:**

- A**—Size: Male NPT x Female NPT x Female NPT
- B**—Zinc plated cast iron (Z), cast iron (CI), steel (S), or stainless steel (SS)
- C**—Brass tubing connectors:  
Yes (Y)  
No (N)  
Not applicable (N/A)
- Weight**—Shipping weight (lbs)

